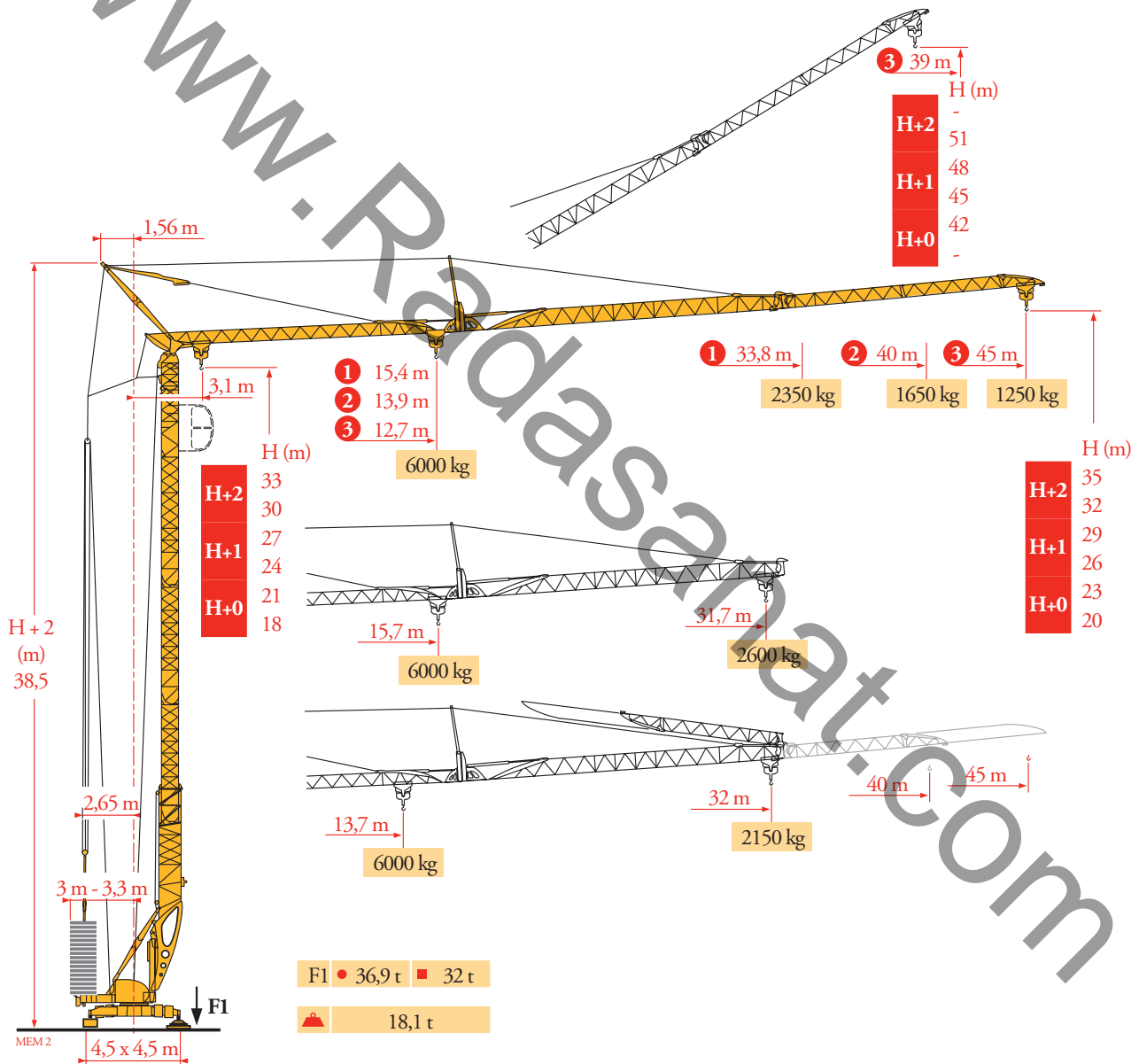


Potain Igo T 85



Courbes de charges	45 m	3,1	12,7	14	16	18	20	22,4	24	26	28	30	32	34	36	38	40	42	45	m
Lastkurven			6000	5330	4520	3915	3445	3000	2760	2500	2285	2100	1935	1795	1670	1555	1460	1370	1250	kg
Load diagrams								3000	2760	2500	2285	2100	1935	1795	1670	1555	1460	1370	1250	kg
Curvas de cargas																				
Curve di carico	40 m	3,1	13,9	16	18	20	22	24,6	26	28	30	32	34	36	38	40				m
Curva de cargas			6000	5045	4375	3850	3430	3000	2805	2565	2355	2180	2020	1885	1760	1650				kg
Диаграммы грузоподъемностей								3000	2805	2565	2355	2180	2020	1885	1760	1650				kg

MEM 3

33,8 m	3,1	15,4	18	20	22	24	26	27,6	30	32	33,8	m
		6000	4995	4405	3930	3545	3220	3000	2715	2510	2350	kg
								3000	2715	2510	2350	kg

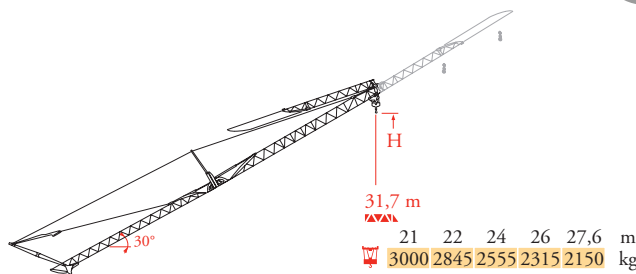
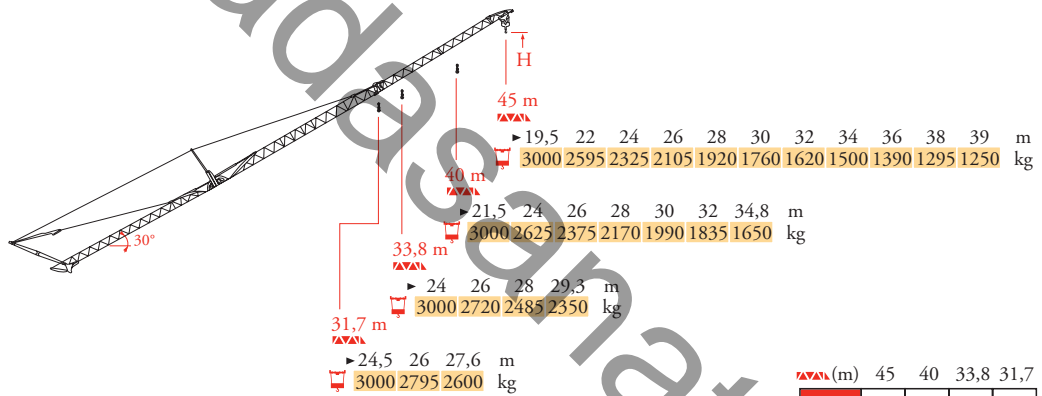
31,7 m	3,1	15,7	18	20	22	24	26	28,1	30	31,7	m
		6000	5110	4505	4020	3625	3295	3000	2780	2600	kg
								3000	2780	2600	kg



32 m	3,1	13,7	16	18	20	22	24,3	26	28	30	32	m
		6000	4985	4320	3805	3390	3000	2770	2530	2325	2150	kg
							3000	2770	2530	2325	2150	kg

Flèche relevée
Ausleger in Steilstellung
Luffing jib
Flecha izada
Braccio impennato
Lança inclinada
Маховая стрела

MEM 3



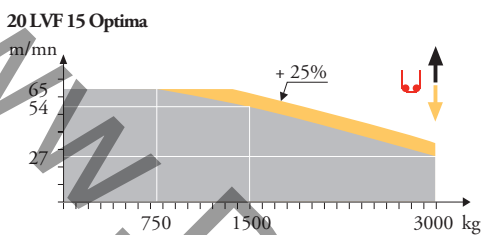
	(m)	45	40	33,8	31,7
H+2		-	-	-	-
		51	48,5	45,4	44,4
H+1		48	45,5	42,4	41,4
		45	42,5	39,4	38,4
H+0		42	39,5	36,4	35,4
		-	-	-	-

- FR** Réactions en service / Reactions in service
 - DE** Reaktionskräfte in Betrieb / Reactions out of service
 - EN** Reactions in service / Reactions out of service
 - ES** Reacciones en servicio / Reacciones fuera de servicio
 - IT** Reazioni in servizio / Reazioni fuori servizio
 - PT** Reações em serviço / Reações fora de serviço
 - RU** Реакции при работе / Реакции в покое
- A vide sans lest (ni train de transport) avec flèche et hauteur maximum. / Ohne Last, Ballast (und Transportachse), mit Maximalausleger und Maximalhöhe. / Without load, ballast (or transport axes), with maximum jib and maximum height. / Sin carga, sin lastre, (ni tren de transporte), flecha y altura máxima. / A vuoto, senza zavorra (ne assali di trasporto) con braccio massimo e altezza massima. / Sem carga (nem trem de transporte)- sem lastro com lança e altura máximas. / Вес без груза, балласта (или транспортных осей) с максимальной длиной стрелы и максимальной высотой.

Mécanismes
Antriebe
Mechanisms
Mecanismos
Mecanismi
Mecanismos
Механизмы

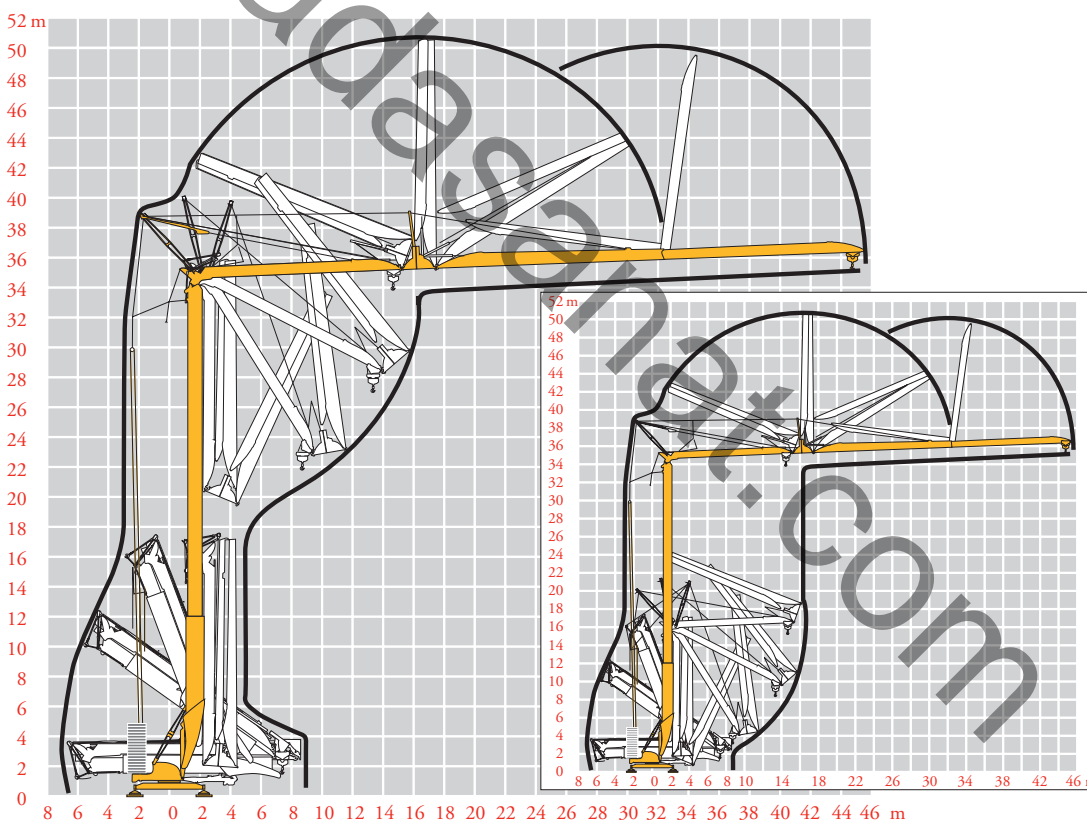
MEM 3

		U					UU					ch ₂ -PS hp	kW		
⬆	20 LVF 15 Optima	m/min	3,2	16	27	54	65	1,6	8	13,5	27	32,5	20	15	
		kg	3000	3000	3000	1500	750	6000	6000	6000	3000	1500			
➡	5 DVF 5	m/min	15 - 30 - 55 (0 → 2000 kg)					15 - 30 - 40 (2000 → 6000 kg)					5,5	4	
⬆	RVF 51 Optima +	°/min U/min - rpm	0 → 0,8											5,5	4
➡	TVF 324	m/min	25											2 x 4	2 x 3
		CEI 38	IEC 38					kVA							
		400 V (+6% -10%) 50 Hz					20 LVF 15 : 31 kVA								
		480 V (+6% -10%) 60 Hz					20 LVF 15 : 31 kVA								



Montage
Montage
Erection
Montaje
Montaggio
Montagem
Монтаж

MEM 3



FR	DE	EN	ES	IT	PT	RU
⬆	Heben	Hoisting	Elevación	Sollevamento	Elevação	Подъем
➡	Katzfahren	Trolleying	Distribución	Distribuzione	Distribuição	Перемещение каретки
⬆	Schwenken	Slewing	Orientación	Rotazione	Rotação	Поворот
➡	Kranfahren	Travelling	Traslación	Traslazione	Translação	Перемещение крана
i	Auf Anfrage	Consult us	Consultarnos	Consultateci	Consultar-nos	Проконсультируйтесь у нас

Igo T 85

Radasanat.com

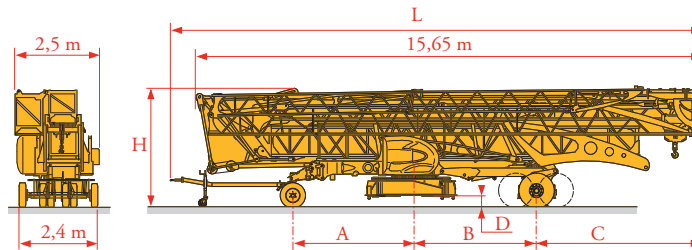
(0098)-9121834995

Courtesy of Crane.Market

Transport
 Transport
 Transport
 Transporte
 Trasporto
 Transporte
 Транспортировка

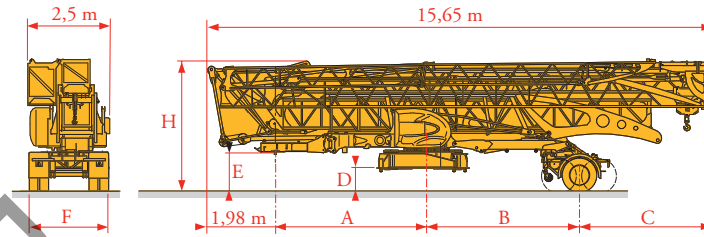
- DJ80/S120
- DJ100/S120
- DJ105/S125
- DJ126M/S125
- DJ126M/S215M

MEM 3



	L (m)	A (m)	B (m)	C (m)	D (m)	H (m)
DJ80/S120	16,65	3,78	3,77	5,2	0,3	3,7
DJ100/S120	16,65	3,78	3,77	5,2	0,3	3,7
DJ105/S125	16,65	3,78	3,77	5,2	0,3	3,7
DJ126M/S125	16,77	3,79	3,77	5,2	0,3	3,7
DJ126M/S215M	16,65	4,58	3,21	5,77	0,6	4

- SL121/J135
- SL121/S215M
- SL122/J215M



	A (m)	B (m)	C (m)	D (m)	E (m)	H (m)	F (m)
SL121/J135	4,69	4,2	4,78	0,7	1,3	4,1	2,45
SL121/S215M	4,69	3,21	5,77	0,6	1,2	4	2,4
SL122/J215M	4,69	3,21	5,77	0,6	1,2	4	2,45

FR

Chantier

DE

Baustelle

EN

Site

ES

Obra

IT

Cantiere

PT

Estaleiro

RU

По строительной площадке



Document commercial non contractuel. Pour toute information technique se référer à la notice correspondante.

Unverbindliches Vertriebsdokument. Für technische Informationen, siehe die entsprechenden Anweisungen.

This commercial document is not legally binding. For any technical information, please refer to the corresponding instructions.

Documento commercial no contractual. Para cualquier información técnica, ver la noticia correspondiente.

Documento commerciale non vincolante, per tutte le informazioni tecniche fare riferimento al catalogo istruzioni.

Documento comercial não contractual. Para qualquer informação técnica complementar consultar as respectivas instruções.

Этот коммерческий документ не является юридически обязательным. Для получения технической информации, см. соответствующие инструкции.

Radasanat.com
 (0098)-9121834995



Manitowoc - Americas - World Headquarters
 2400 S. 44th Street • Manitowoc • WI 54220 USA
 Tel: +1 920 684 4410 • Fax: +1 920 652 9778

Manitowoc - Europe, Middle East & Africa
 Manitowoc France SAS
 18, rue de Charbonnières B.P. 173 • 69132 ECULLY Cedex • FRANCE
 Tel: +33 (0)4 72 18 20 20 • Fax: +33 (0)4 72 18 20 00

Manitowoc - Asia Pacific
 16F Xu Hui Yuan Building,
 1089 Zhongshan No.2 Road (S) • Shanghai 200030 China
 Tel: +86 21 6457 0066 • Fax: +86 21 6457 4955

REF. 200711 MEM 4

Igo T 85