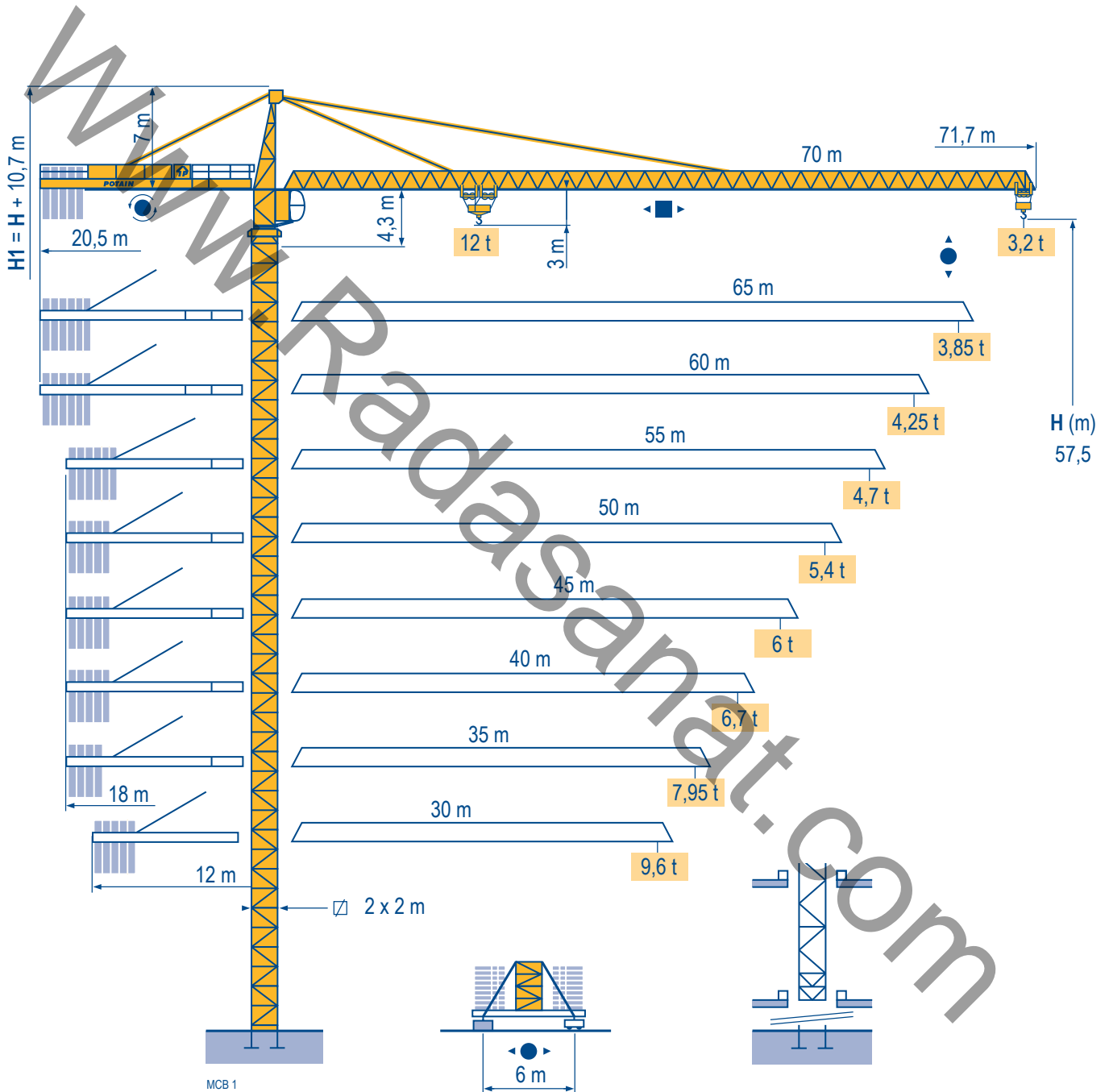


# MC 310 K12

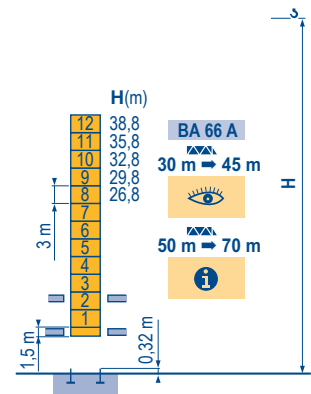
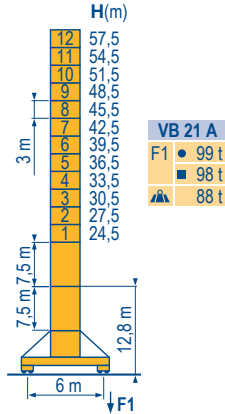
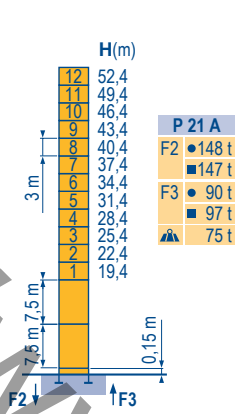


Radasanat.com  
(0098)-9121834995

Masts / Reactions

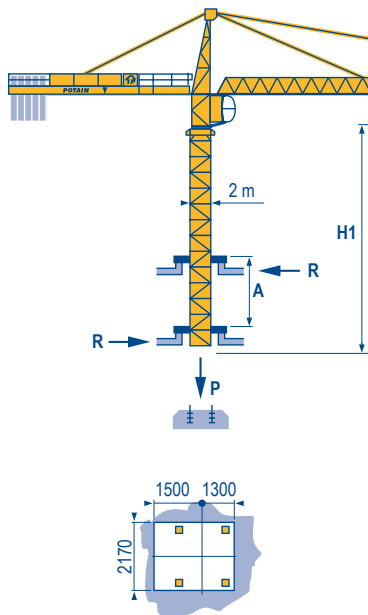
□ 2 m  
 ▴ 30 m → 70 m

MCB 1



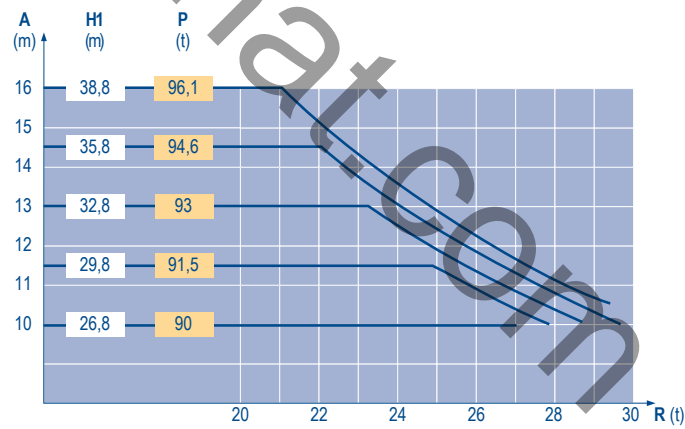
Climbing crane

MCB 1



**BA 66 A**

30 m → 45 m



TOPKIT  
 MC 310 K12

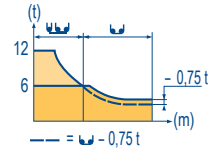
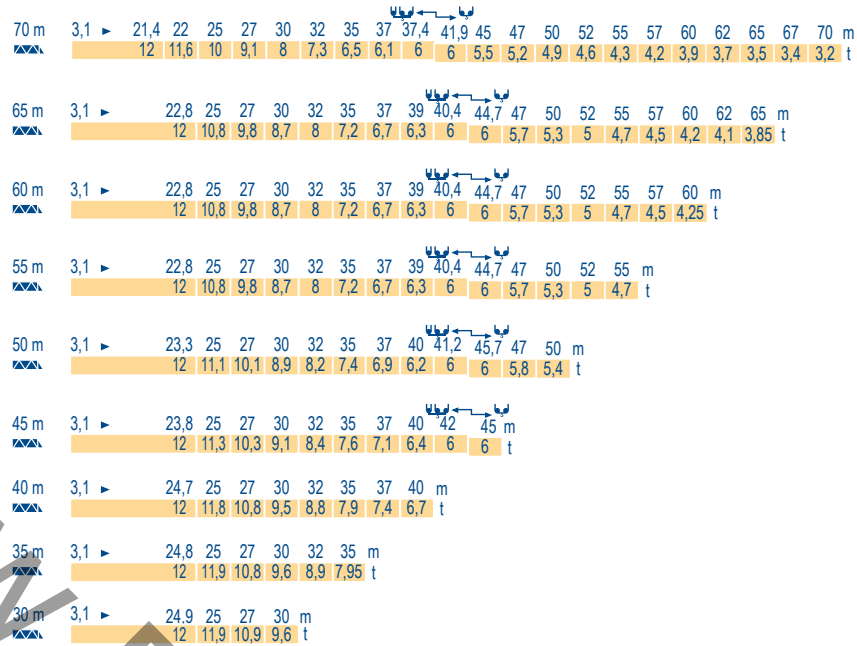


GB

- Reactions in service
- Reactions out of service
- ▲ Without load, ballast (or transport axles), with maximum jib and maximum height.
- i Consult us
- 👁 See climbing crane

### Load diagrams

MCB 1



### Counter-jib ballast

MCB 1

	4 600 - 4 200 - 2 300 kg		4 200 - 700 kg	
		(kg)		(kg)
70 m	20,5 m	24 500	20,5 m	24 500
65 m	20,5 m	23 700	20,5 m	23 800
60 m	20,5 m	21 800	20,5 m	21 700
55 m	18 m	24 900	18 m	24 500
50 m	18 m	22 600	18 m	22 400
45 m	18 m	19 500	18 m	18 900
40 m	18 m	17 200	18 m	16 800
35 m	18 m	14 900	18 m	14 000
30 m	12 m	20 700	12 m	20 300

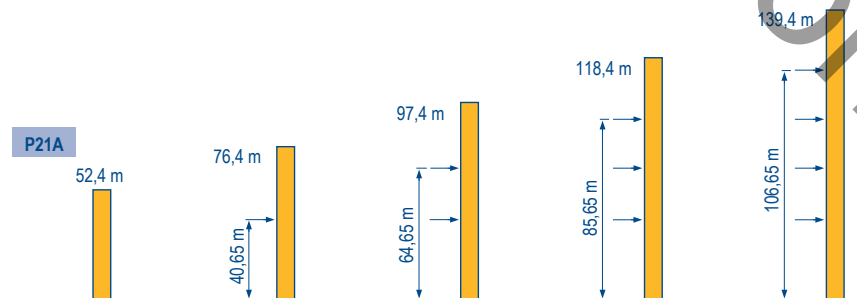
### Base ballast

MCB 1

2 m	VB 21 A	H (m)	57,5	54,5	51,5	48,5	45,5	42,5	39,5	36,5	33,5	30,5	27,5	24,5	21,5
		(t)	84	72	72	72	72	72	72	60	60	60	60	60	60

### Anchorage

MCB 1



TOPKIT  
MC 310 K12




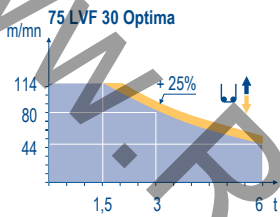
GB





- A Distance between collars
- H1 Crane height
- P Crane weight (in service)
- R Horizontal reaction


**Mechanisms**

MCB 3


		↕ ↑		↕ ↕ ↑		hp	kW		
↑	70 RCS 30	m/min	0 → 40	0 → 80	0 → 20	0 → 40	70	51	523 m
	t	6	3	12	6				
↑	75 LVF 30 Optima	m/min	0 → 44 → 56 → 80 → 114		0 → 22 → 28 → 40 → 57		75	55	570 m
	t	6	4,5	3	1,5	12	9	6	3
↔	6 D3 V4	m/min	15 - 50 (12 t)			100 (6 t)	7,4	5,4	
↻	RVF 162 Optima	rpm	0 → 0,7			2 x 7,5	2 x 5,5		
↻	VB 20A VB 21A	m/min	13,5 - 27			4 x 7		4 x 5,2	
↻	RT 544 A1 2V R ≥ 13 m								
		CEI 38	IEC 38		kVA				
		400 V (+6% -10%) 50 Hz			70 RCS : 100 kVA 75 LVF : 100 kVA				



-  Hoisting
-  Trolleying
-  Slewing
-  Travelling

 This commercial document is not legally binding. For any technical information, please refer to the corresponding instructions.

**Radasanat.com**  
**(0098)-9121834995**







**Americas**  
 Tel : +1 888 479 7278  
 Tel : +1 717 593 2000

**Europe – Middle East – Africa**  
 Tel : +33 (0) 4 72 81 50 00  
 Tel : +44 (0) 191 522 2000

**Asia – Pacific**  
 Tel : +65 6264 1188  
 Fax : +65 6862 4040

www.manitowoccrane.com

**Manitowoc Crane Group Asia Pte Ltd**  
 Maniowoc Crane Group  
 4 Kwong Min Road  
 Singapore 628707  
 Tel: +65 6264 1188  
 Fax: +65 6862 4040  
 www.manitowoccrane.com

**MC 310 k12**  
 Réf. 2004 45 MCB 3

Copyright.Reproduction interdite © POTAIN 2004