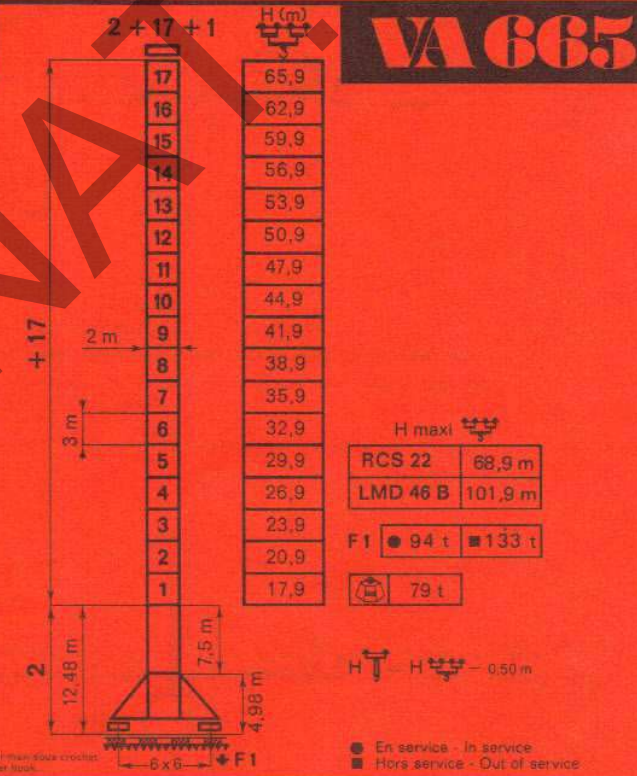
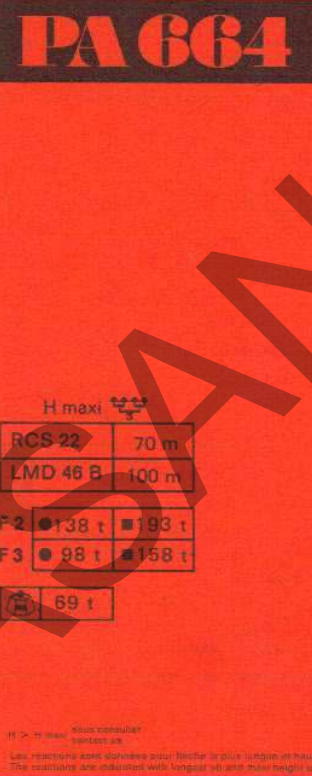
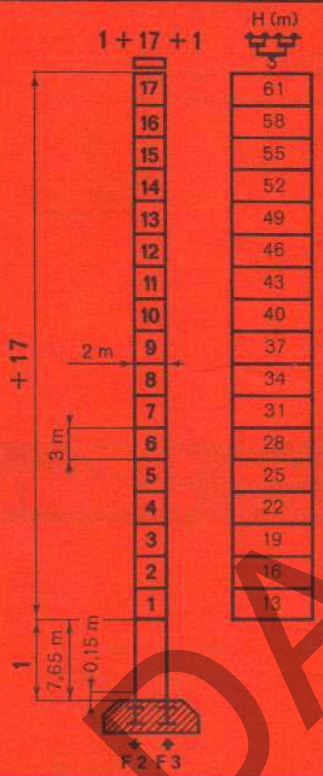
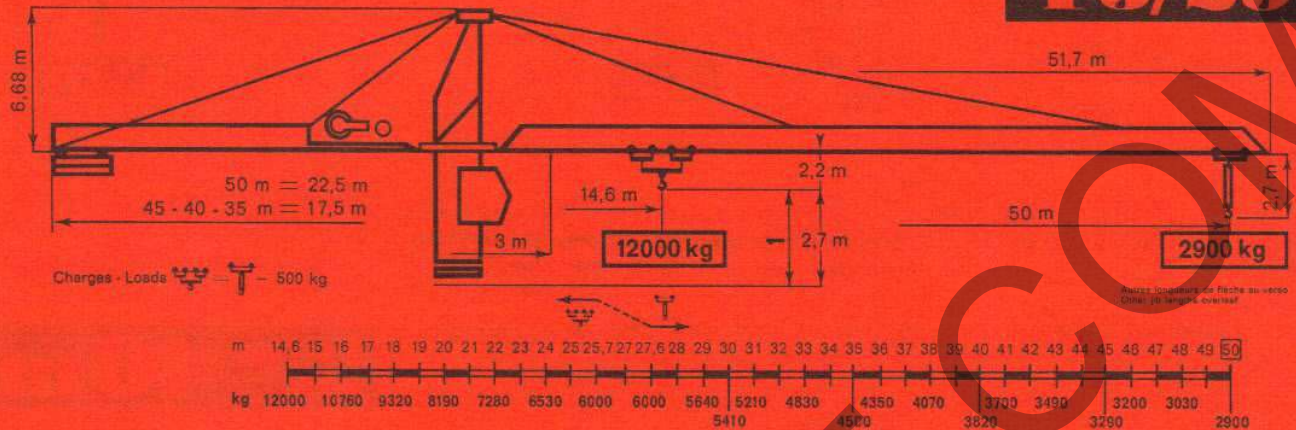




# Potain

# TOPKIT

## F3/29



			m/mn	kg
① RCS 22 45 ch/hp			0 → 56	3000
			0 → 28	6000
			0 → 28	6000
			0 → 14	12000
② LMD 46			0 → 100	3000
			0 → 50	6000
			0 → 200	1500
			0 → 50	6000
			0 → 25	12000
			0 → 100	3000

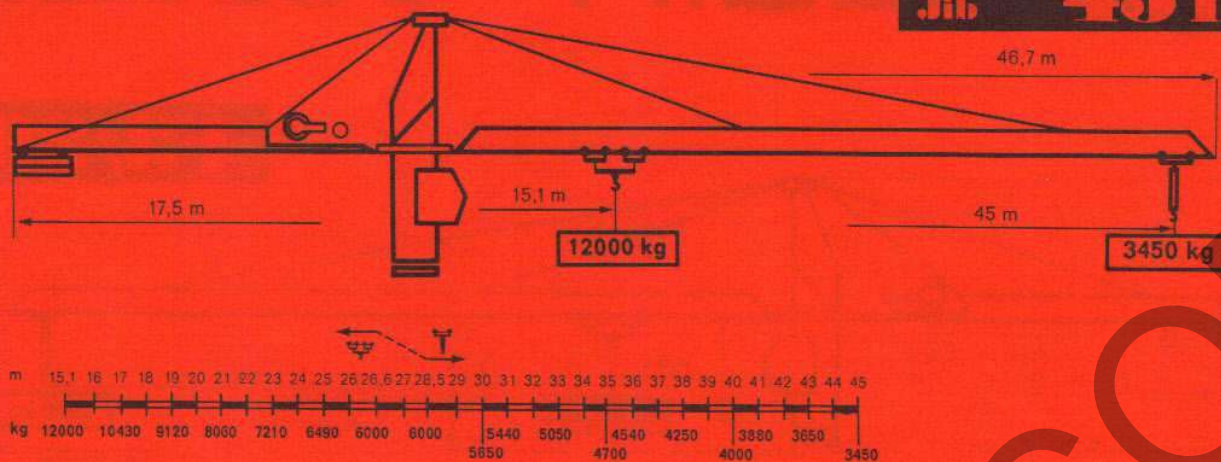
	OMD 55L	0 → 0,8 tr/mn rpm	2x8 ch/hp
	① DMD30	12 t → 60 m/mn	8 ch/hp
	② DMD35	6 t → 100 m/mn 12 t → 50 m/mn	8 ch/hp
	RT 544	22 m/mn	4x4 ch/hp
	RTT 645	27 m/mn	4x5 ch/hp
	RCT 646	12-60 m/mn	4 x 6,5 ch/hp

● Normal - Normal; ●● Rapide - Fast H<sub>0</sub>2+10+

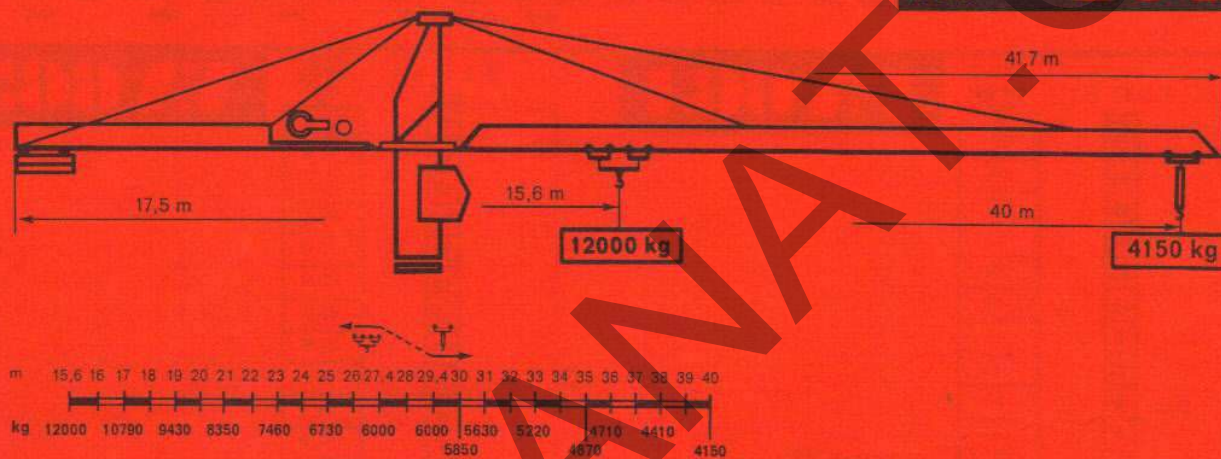
380V-50Hz	Reseau Mains supply	Groupe electrogene Generator unit
	① 75 KVA	nous consulter consult us
	② 120 KVA	



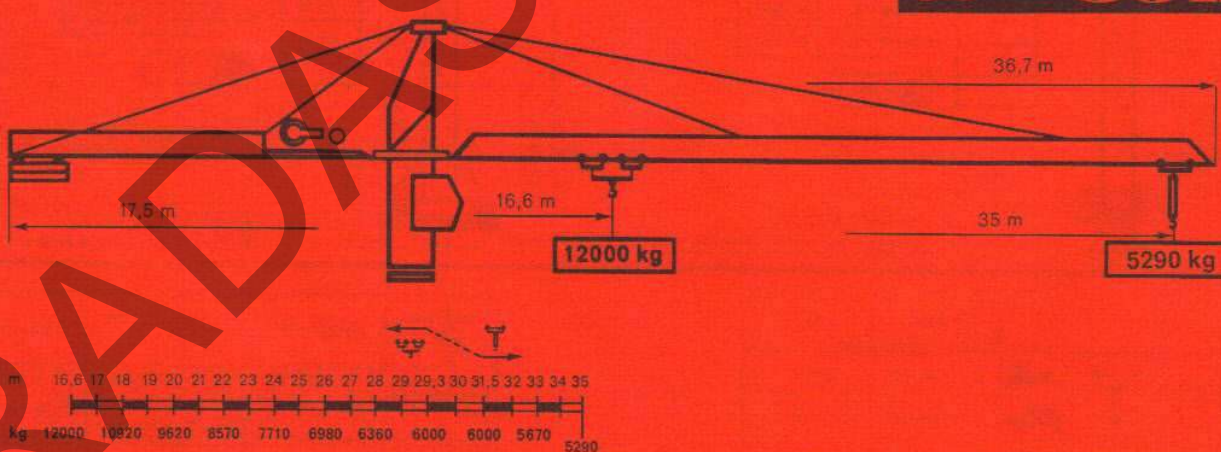
## Flèche Jib 45 m



## Flèche Jib 40 m



## Flèche Jib 35 m



 **Potain**

B.P. 173 - F 69130 ECULLY - Route de Charbonnières  
 Tél. (78) 33.81.81+ - Télex 330179

AGENCES :

Paris - Lyon - Marseille - Rennes - Strasbourg - Toulouse - Nancy

EXCOST - 85 Avenue du Président Roosevelt

92100 Nanterre - FRANCE - Tél. (1) 687.22.23 (2 lignes)

RADASANAT.COM (0098) - 9121834995

Subject to modification

Printed in France - Réf. 538 DZC3

Courtesy of Crane.Market